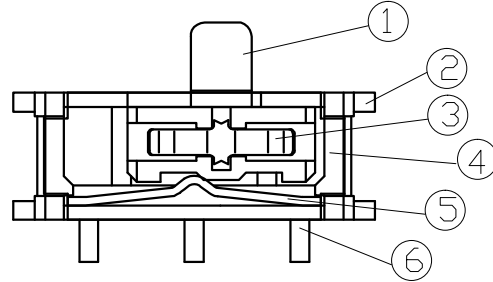
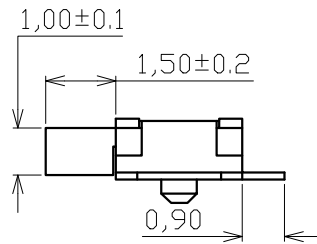
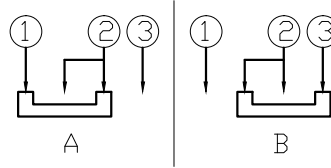


without cover



SCHEMATIC



1. Material list

ITEM	DESCRIPTION	MATERIAL
1	Terminal	C5191
2	Anchor	SUS
3	Base	LCP<BLACK>
4	Spring	C5191
5	Cover	C5191
6	pushing handle	PA46<Black>

2. CHARACTERISTICS

Operating Force	150 ± 100gf
Pre travel	1.5 ± 0.15mm
Resistance	100mΩ max
Life	10,000cycles
Rating	5V DC 0.1A<MAX>
Flatness	0.1max
Piece weight	0.078g

