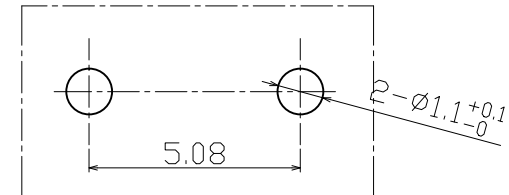


ITEM	PART NAME	MATERIAL	COLOR
1	CONTACT	Ag Alloy	
2	MOVABLE PLATE	SUS	
3	BUTTON	POM	RED
4	COVER	PA6	BLACK
5	BASE	LCP	BLACK
6	TERMINAL	SILVER PLATE BRASS	

P.C.B mounting hole detail



SCHEMATIC



Operating Force	70-80, 80-90gf
Release Force	15gf min
Operating Position	3.30±0.2mm
Free Position	3.60±0.2mm
Pre Travel	0.5 Max
Over Travel	0.1 Min
CCP Value	20% min
Endurance	1,000,000 cycles