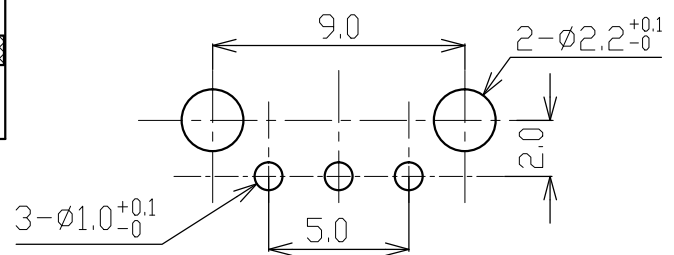
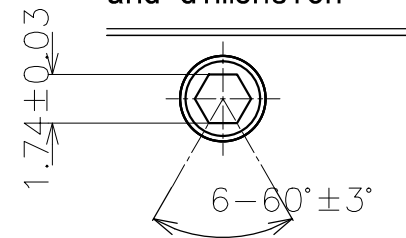


(Tolerance: ±0.1)
 (P.C.B thickness t=1.6)



Shaft hole shape and dimension



1. Material list

ITEM	DESCRIPTION	MATERIAL
1	Cover	SPCC
2	Anchor Plate	SUS301
3	Wheel gear (BLACK)	POM BLACK
4	Spring	TITANIUM COPPER
5	Base	PA66
6	Terminal	C5191

Rating	5VDC 100mA
Contact Resistance	500mΩ Max
Insulation Resistance	50MΩ Min
Dielectric Voltage	250VAC 60±5S
Endurance	300,000 cycles
Rotational Force	15-30gf.cm