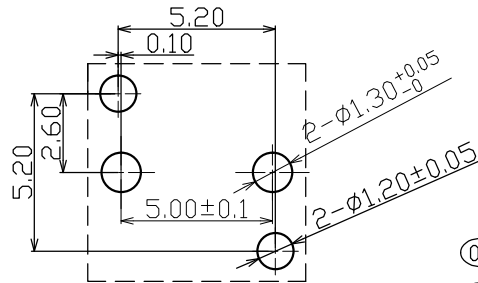
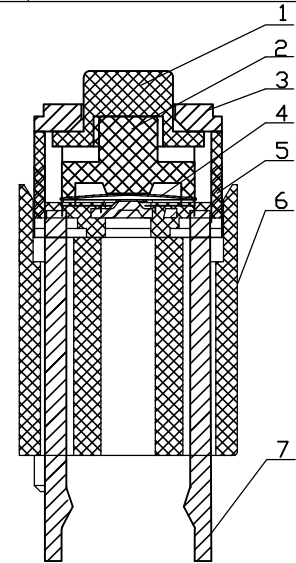


(Tolerance: ± 0.1)
(P.C.B thickness $t=1.6$)



| ITEM | PART NAME | MATERIAL | COLOR |
|------|------------|--------------------|-------|
| 1 | BUTTON | POM | BLACK |
| 2 | SILICA GEL | SILICA GEL | |
| 3 | COVER | PBT | BLACK |
| 4 | SPRING | SUS | |
| 5 | BASE 1 | PA66 | BLACK |
| 6 | BASE 2 | PA66 | BLACK |
| 7 | TERMINAL | SILVER PLATE BRASS | |



| | |
|-----------------------|-------------------------|
| Rating | 6VDC 50mA |
| Contact Resistance | 500m Ω Max |
| Insulation Resistance | 50M Ω Min |
| Dielectric Voltage | 250VAC 60 \pm 5S |
| Endurance | 5,000,000 cycles |
| Operating Force | 70 \pm 15gf (每10gf一段) |
| Pre-travel | 0.30 \pm 0.20mm |
| CCP | 22% Min |

(09)

(10)

(11)